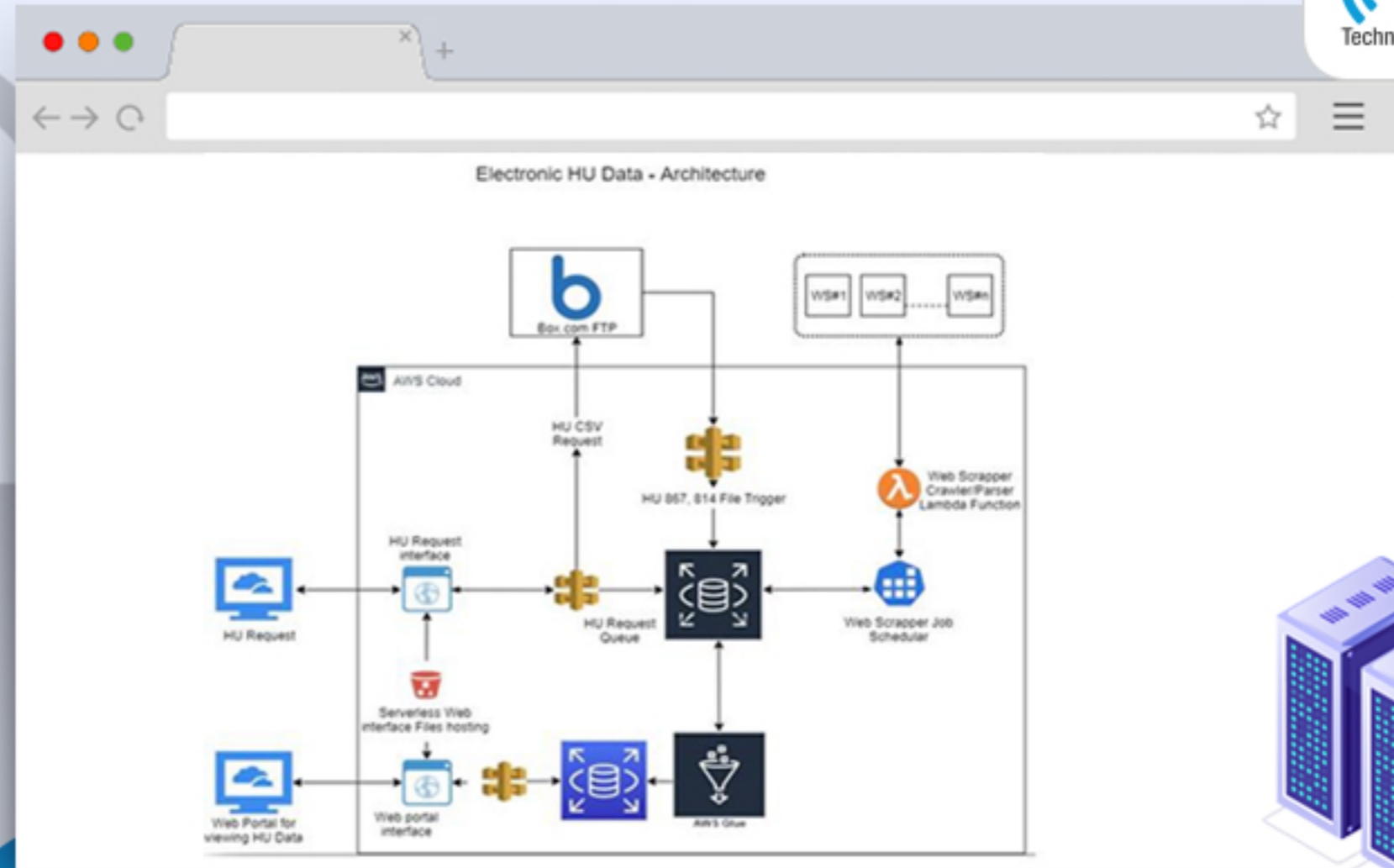


EDI ETL SERVERLESS CLOUD APPLICATION

This module is implemented for Us client, for consolidating the electrical data from various electricity provider. Data from the various provider is supplied in EDI 867 format.

This application is responsible for performing ETL operation on EDI data and store in centralized data. After storing data in centralized database, a job is responsible for sending the user data to Salesforce using SF API.



Application has 3 layers for extracting HU data from various provider – following are the details:

LAYER 1

- In this layer we have data request and Raw data received from various sources.
- Data is requested by generating a CSV for EDI file or a Web scrapper.
- All the data request will be stored in HU request queue in RDS.
- A web interface is provided for requesting HU data.

LAYER 2

- In this layer data will be extracted from Raw data received i.e. HU Data file 867, Acknowledgement 814 and Web scrapper.
- All the extracted data will be stored in RDS database.

LAYER 3

- In this layer data captured from 2nd Layer RDS DB will be fetched and stored in structured format in another DB in RDS using ETL jobs.
- A web interface is provided for fetching this data.

